



# HYPRO®

SPRAY PRODUCTS

## High Flow Pressure Regulator/Relief Valve

Heavy-duty, high-flow design, 20-55 GPM



Part No. 3300-0103  
1" x 1" Version

Part No. 3300-0102  
3/4" x 1/2" Version

### FEATURES & BENEFITS:

- Longest life pressure regulator available in the industry, out-performing the competition by up to 5 times
- Heavy-duty design for maximum durability
- Patent-pending design lets you rebuild valve to 100% new performance
- New cartridge design allows you to repair the valve without removing it from the system
- Balanced design allows for smooth transitioning from regulating to relief without damaging pressure spikes to the pump system
- Provides system pressure setting and protection for single or multiple gun and pump systems from 20 gpm to 55 gpm
- Two port size options (3/4" and 1") to easily retrofit into most carwash systems
- Can be setup for use as a pressure regulator or a relief valve (see back for typical plumbing illustrations)



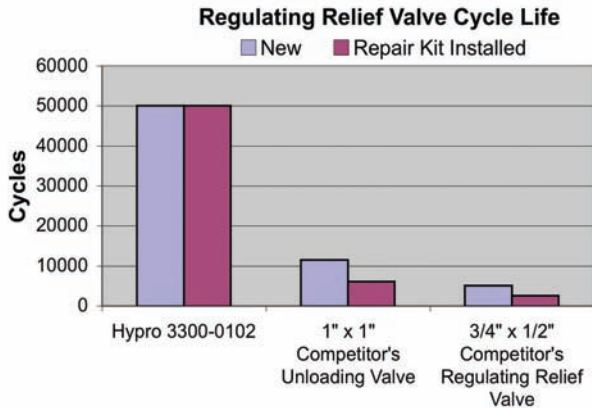
Piston, sleeve and seat repair kit part number 3430-0747 restores the high flow relief valve to like-new condition.



Great for use with Hypro's 38 GPM-2535S and 47 GPM-2345S triplex plunger pumps.

# High Flow Pressure Regulator/Relief Valve

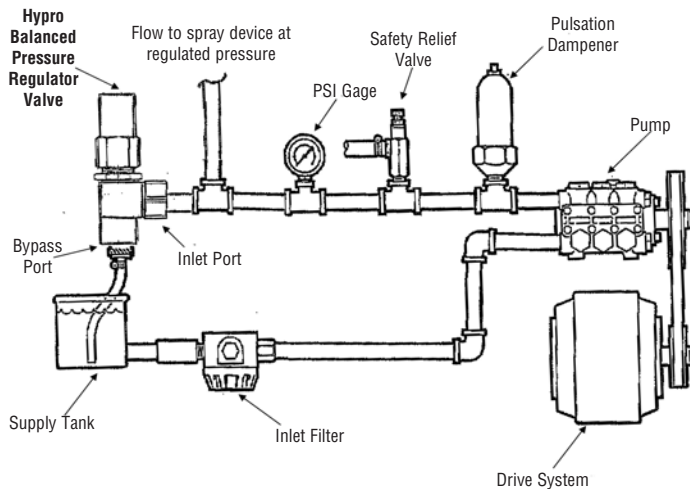
## SPECIFICATIONS



Hypro's valve operated for an average of 50 thousand cycles prior to leaking. After installing the designated repair kit, the valve lasted an average of an additional 50 thousand cycles ~ equal to the life of a new valve. The valve can be repaired again and achieve the same extended life.

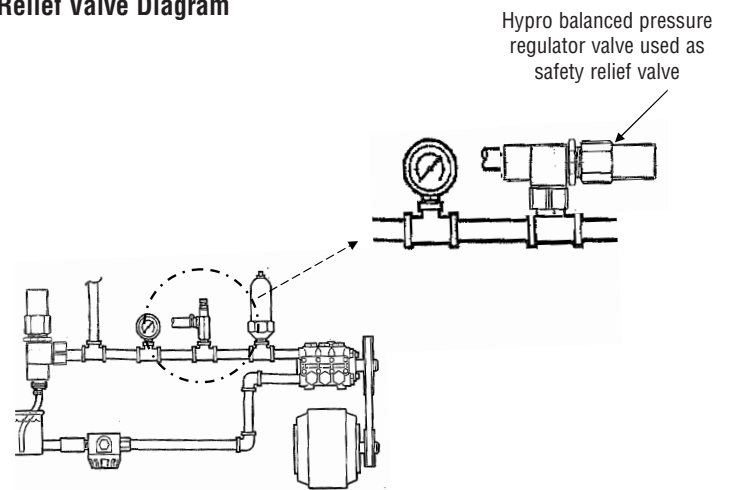
Testing showed the competitor's valves lasting between 8-12 thousand cycles prior to leaking. After installing the designated repair kits, the valves achieved an average of 50% fewer cycles as new.

### Pressure Regulator Diagram



Hypro balanced pressure regulator provides for flow to be redirected (bypassed) from the spray nozzle to a flow path back to the inbound side of the pump (supply tank). Hypro's balanced pressure regulator is designed to automatically adjust bypass flow amounts to maintain desired system pressure.

### Relief Valve Diagram



Hypro balanced pressure regulator can also be used as a "safety device" pressure relief valve. It is recommended that any pressure system contain a safety device installed in the outbound side of the pump to guard against failure of component parts and the development of dangerously high pressures. The valve will open and bypass the flow back to the inlet side of the pump (supply tank) to relieve the system of the high pressure condition.



**Pentair**

**SPRAY & INJECTION TECHNOLOGIES GROUP**

375 Fifth Avenue NW • New Brighton, MN 55112

Phone: (651) 766-6300 • 800-424-9776 • Fax: 800-323-6496

[www.hypropumps.com](http://www.hypropumps.com)