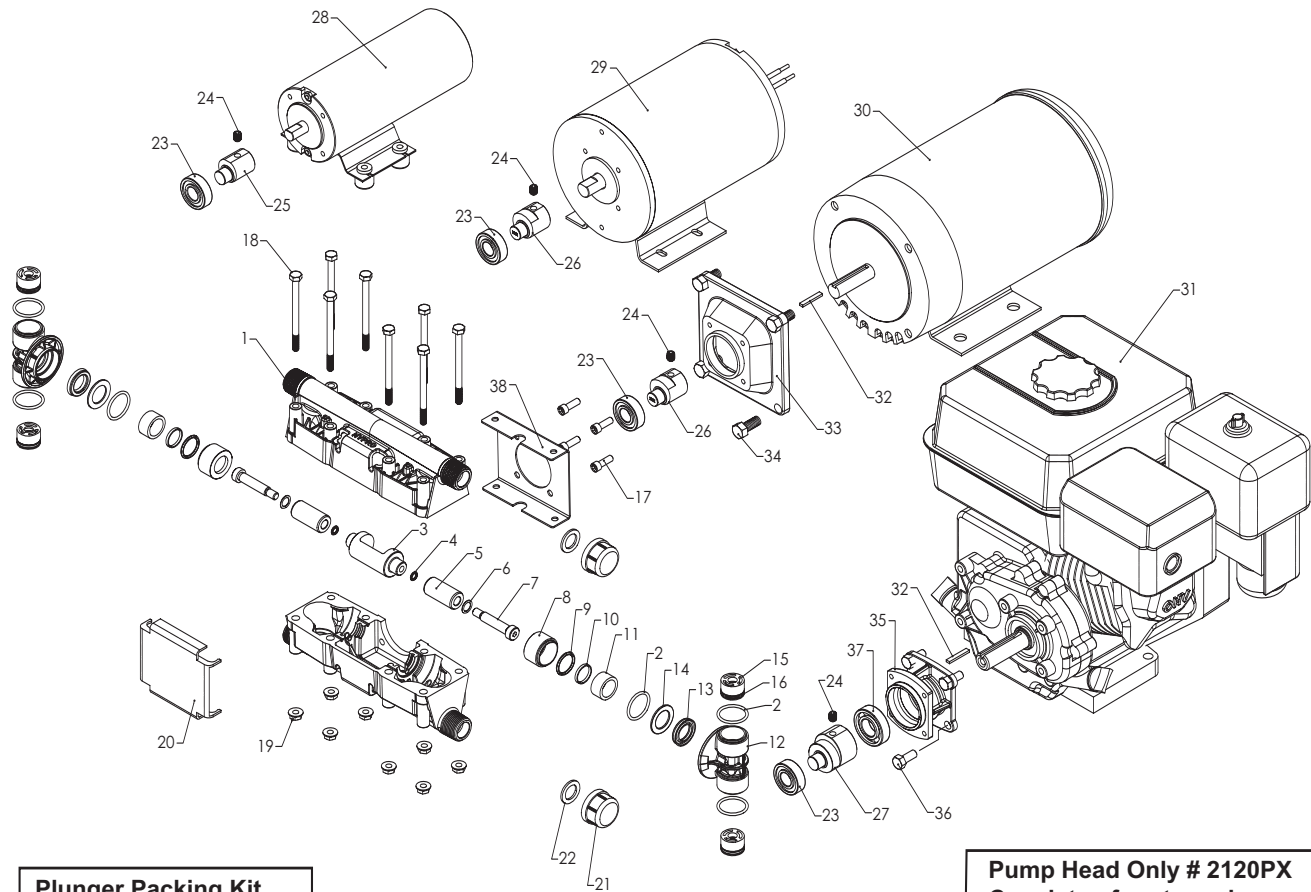


2120 Plunger Series



**Plunger Packing Kit
No. 3430-0631 Includes:**

Ref. No.	Qty.
2	6
4	2
6	2
9	2
10	2
11	2
13	2

**Plunger Pump
Valve Kit
Number 3430-0632
Includes:**

Ref. No.	Qty.
2	4
15	4
16	4

**Engine Flange Mounting Kit
Number 3430-0658
Includes:**

Ref. No.	Qty.
32	1
35	1
36	4
37	1

**Pump Head Only # 2120PX
Consists of part numbers
1 thru 22.**

Note: When ordering parts, give quantity, part number, description and complete model number. Reference numbers are used ONLY to identify parts in the drawing and NOT to be used as order numbers.

Ref. No.	Qty. Req'd.	Part No.	Description
1	2	0101-2100P	Pump Body (Polyester PBT)
2	6	1720-0076	O-ring
3	1	0500-2100	Connecting Rod
4	2	1720-0033	O-ring
5	2	3500-0070	Ceramic Plunger (3/4" in Dia.)
6	2	2270-0015	Seal Washer
7	2	2220-0104	Shoulder Screw
8	2	1830-0171	Guide Retainer
9	2	1720-0202	O-ring
10	2	1440-0010	Seal Ring
11	2	1440-0086	Plunger Guide (Carbon)
12	2	0717-2100P	Valve Retainer
13	2	2150-0091	U-Cup Seal (Viton)
14	2	2270-0095	U-Cup Backup Ring
15	4	3400-0088	Valve Assy.
16	4	1720-0007	O-ring
17	4	2220-0041	Hex Head Cap Screw
18	8	2210-0137	Bolts
19	8	2250-0077	Flanged Nuts

Ref. No.	Qty. Req'd.	Part No.	Description
20	1	2840-0083	Nameplate
21	2	2102030	End Cap
22	2	G40013	End Cap Washer
23	1	2000-0015	Bearing
24	1	2230-0003	Setscrew
25	1	0550-2145	Shaft Eccentric (2120P-P18DC)
26	1	0551-2175	Shaft Eccentric (2120P-P35DC, P50AC)
27	1	0552-2190	Shaft Eccentric (Gas Engine)
28	1	2570-0025	DC Motor (20 Amp)
29	1	2570-0026	DC Motor (36 Amp)
30	1	21721	Motor (1/2 hp, 56C Frame AC)
30	1	2570-0027	Motor (1/2 hp, 56C Frame DC)
31	1	2549-0040	Gas Engine (2:1 Reduced)
32	1	1610-0061	Key
33	1	0706-2100A	Adapter Flange (56C Motor)
34	4	2210-0020	Bolts
35	1	0708-2100A	Adapter Flange (Gas Engine)
36	4	2210-0146	Bolts
37	1	2000-0017	Bearing