

Piston Pumps

Low Flow, Medium Pressure, Positive Displacement Pumps

Hypro's Twin® piston pumps are used in a variety of spraying and pressure cleaning applications, as well as hydrostatic testing. These heavy-duty pumps are ideal for fluid handling of water and non-abrasive or general use chemicals.

All pumps are constructed from cast iron materials. They feature stainless steel valves and ball bearing, leather or fabric-reinforced Buna-N or straight Buna-N cups.

You can choose from a variety of drive systems to include: belt and pulley, 540 rpm PTO, gasoline engine or electric motor.

These pumps are available in a variety of flow and pressure ranges up to a maximum of 10 gpm/37.9 lpm and 1000 psi/68.9 bar with maximum fluid temperatures of 140°F/60°C (piston pumps) and 180°F/82°C (plunger pumps).

All of the Hypro piston pumps share these quality features:

- Non-abrasive and general use chemical compatibility
- Compact, lightweight and easy to install
- Replaceable leather cups for insecticides, herbicides and aromatic solvents
- Replaceable Buna-N and fabric-reinforced Buna-N cups for water, soap and detergent solutions
- Bi-rotational
- Self-priming operation



Big Twin®

Models 5206C and 5206C-H



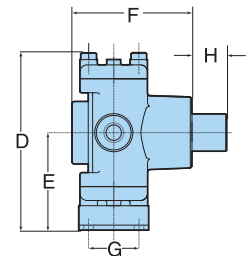
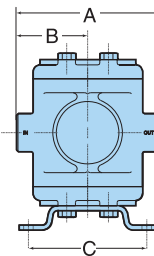
Features

- Max. flow: 8 gpm/30.3 lpm
- Max. pressure: 400 psi/27.6 bar
- Max. rated speed: 800 rpm
- Shaft size: 1" O.D. solid shaft, 1 1/8" I.D. hollow shaft
- Port sizes: 3/4" inlet, 3/4" outlet
- Max. fluid temperature: 140°F/60°C
- Weight: 18 lbs./8.2 kg
- Pump shaft rotation: bi-rotational
- Cups: Leather standard (fabric-reinforced and Buna-N available)
- Recommended to be used with a Model 3375-0003 surge tank

Dimensions

Standard	Metric
A. 6 3/4"	171 mm
B. 3 3/8"	86 mm
C. 5"	127 mm
D. 7 1/16"	195 mm
E. 4 1/16"	103 mm
F. 6 1/8"	156 mm
G. 4 3/8"	111 mm
H. Hollow Shaft	
2 1/4"	35 mm
H. Solid Shaft	
2"	50 mm

Pressure in PSI and BAR	GPM HP		GPM HP		GPM HP		GPM HP		GPM HP		GPM HP	
	LPM	HP	LPM	HP	LPM	HP	LPM	HP	LPM	HP	LPM	HP
	@400 RPM		@500 RPM		@540 RPM		@600 RPM		@700 RPM		@800 RPM	
25 PSI	3.9	.26	4.9	.29	5.4	.31	6.0	.34	7.0	.40	8.0	.46
1.7 BAR	14.8	.26	18.5	.29	20.4	.31	22.7	.34	26.5	.40	30.3	.46
100 PSI	3.9	.40	5.0	.46	5.4	.50	6.0	.56	7.0	.65	7.9	.74
6.9 BAR	14.8	.40	18.9	.46	20.4	.50	22.7	.56	26.5	.65	29.9	.74
200 PSI	4.0	.66	5.0	.75	5.4	.81	6.0	.90	6.9	1.1	7.8	1.2
13.8 BAR	15.1	.66	18.9	.75	20.4	.81	22.7	.90	26.1	1.1	29.5	1.2
300 PSI	3.9	.89	5.0	1.1	5.3	1.2	5.9	1.3	6.9	1.5	7.7	1.7
20.9 BAR	14.8	.89	18.9	1.1	20.1	1.2	22.3	1.3	26.1	1.5	29.1	1.7
400 PSI	3.9	1.1	4.9	1.4	5.3	1.5	5.9	1.6	6.9	1.9	7.7	2.2
27.6 BAR	14.8	1.1	18.5	1.4	20.1	1.5	22.3	1.6	26.1	1.9	29.1	2.2



Big Twin®

Models 5210C and 5210C-H



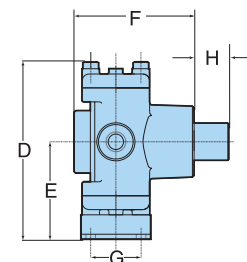
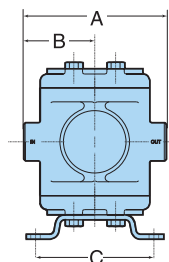
Features

- Max. flow: 10 gpm/37.9 lpm
- Max. pressure: 400 psi/27.6 bar
- Max. rated speed: 600 rpm
- Shaft size: 1" O.D. solid shaft, 1 1/8" I.D. hollow shaft
- Port sizes: 3/4" inlet, 3/4" outlet
- Max. fluid temperature: 140°F/60°C
- Weight: 18 lbs./8.2 kg
- Pump shaft rotation: bi-rotational
- Cups: Leather standard (fabric-reinforced and Buna-N available)
- Recommended to be used with a Model 3375-0003 surge tank

Dimensions

Standard	Metric
A. 6 3/4"	171 mm
B. 3 3/8"	86 mm
C. 5"	127 mm
D. 7 1/16"	195 mm
E. 4 1/16"	103 mm
F. 6 1/8"	156 mm
G. 4 3/8"	111 mm
H. Hollow Shaft	
2 1/4"	35 mm
H. Solid Shaft	
2"	50 mm

Pressure in PSI and BAR	GPM HP		GPM HP		GPM HP		GPM HP	
	LPM	HP	LPM	HP	LPM	HP	LPM	HP
	@400 RPM		@500 RPM		@540 RPM		@600 RPM	
25 PSI	7.3	.39	8.9	.57	9.4	.66	10.0	.73
1.7 BAR	27.6	.39	33.7	.57	35.6	.66	37.9	.73
100 PSI	7.3	.69	8.9	.87	9.4	.94	9.9	1.10
6.9 BAR	27.6	.69	33.7	.87	35.6	.94	37.5	1.10
200 PSI	7.2	1.2	8.8	1.5	9.3	1.6	9.9	1.7
13.8 BAR	27.2	1.2	33.3	1.5	35.2	1.6	37.5	1.7
300 PSI	7.2	1.7	8.8	2.0	9.3	2.2	9.8	2.3
20.7 BAR	27.2	1.7	33.3	2.0	35.2	2.2	37.1	2.3
400 PSI	7.2	2.1	8.7	2.6	9.2	2.7	9.8	3.0
27.6 BAR	27.2	2.1	32.9	2.6	34.8	2.7	37.1	3.0



Small Twin®

Series 5315, 5320, 5325 and 5330

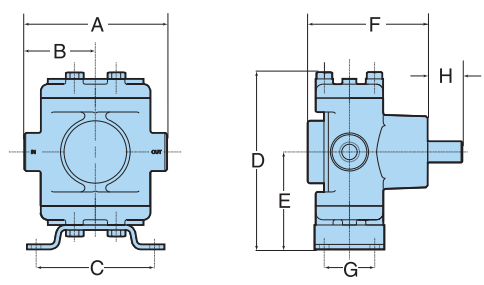


Features

- Max. flow: 1.5 to 3.0 gpm/5.7 to 49.2 lpm
- Max. pressure: 500 psi/34.5 bar
- Max. rated speed: 1800 rpm
- Max. fluid temperature: 140°F/60°C
- Shaft size: 5/8" O.D. solid shaft, 5/8" I.D. hollow shaft
- Port sizes: 1/2" inlet, 1/2" outlet
- Weight: 10 lbs./4.5 kg
- Pump shaft rotation: bi-rotational
- Cups: Leather standard for 5300 Series (Buna-N, Teflon and Viton available)
- Injector head available
- Models require a pulsation dampener (such as a 3375-0012 pulse hose) on the discharge side

Pressure in PSI and BAR	5315		5320		5325		5330	
	GPM	HP	GPM	HP	GPM	HP	GPM	HP
	LPM	HP	LPM	HP	LPM	HP	LPM	HP
50 PSI	1.56	.12	2.22	.21	2.56	.25	3.02	.37
3.4 BAR	5.9	.12	8.4	.21	9.7	.25	11.4	.37
100 PSI	1.52	.15	2.18	.28	2.54	.37	3.01	.49
6.9 BAR	5.8	.15	8.3	.28	9.6	.37	11.4	.49
200 PSI	1.50	.28	2.16	.43	2.52	.52	3.00	.74
13.8 BAR	5.7	.28	8.2	.43	9.3	.52	11.4	.74
300 PSI	1.47	.35	2.12	.57	2.50	.68	2.98	.92
20.7 BAR	5.6	.35	8.0	.57	9.5	.68	11.3	.92
400 PSI	1.45	.43	2.11	.71	2.10	.82	2.96	1.11
27.6 BAR	5.5	.43	8.0	.71	7.9	.82	11.2	1.11
500 PSI	1.44	.56	2.10	.83	2.44	.96	2.94	1.23
34.5 BAR	5.5	.56	7.9	.83	9.9	.96	11.1	1.23

Dimensions	
Standard	Metric
A. 5 1/8"	130 mm
B. 2 3/16"	65 mm
C. 4 1/4"	108 mm
D. 6 3/8"	162 mm
E. 3 1/2"	89 mm
F. 4 1 3/32"	110.3 mm
G. 1 1 3/16"	46 mm
H. Hollow Shaft	
7/8"	22 mm
H. Solid Shaft	
1 1/4"	32 mm



Small Twin®

Models 5324C and 5324C-H

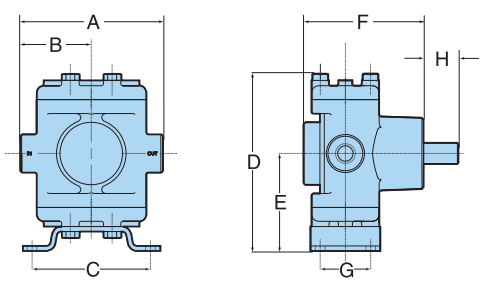


Features

- Max. flow: .96 to 2.9 gpm/3.6 to 11.0 lpm
- Max. pressure: 800 psi/55.2 bar
- Max. rated speed: 1800 rpm
- Max. fluid temperature: 140°F/60°C
- Shaft size: 5/8" O.D. solid shaft, 5/8" I.D. hollow shaft
- Port sizes: 1/2" inlet, 1/2" outlet
- Weight: 11 lbs./5 kg
- Pump shaft rotation: bi-rotational
- Cups: Buna-N standard
- Injector head available
- Model 5324 requires a pulsation dampener (such as a 3375-0012 pulse hose) on the discharge side

Pressure in PSI and BAR	GPM		GPM		GPM		GPM		GPM	
	LPM	HP	LPM	HP	LPM	HP	LPM	HP	LPM	HP
	@600 RPM		@900 RPM		@1200 RPM		@1450 RPM		@1725 RPM	
100 PSI	.96	.12	1.51	.19	2.00	.28	2.42	.34	2.90	.40
6.9 BAR	3.6	.12	5.7	.19	7.6	.28	9.2	.34	11.0	.40
200 PSI	.94	.19	1.49	.30	1.98	.41	2.40	.50	2.89	.59
13.8 BAR	3.6	.19	5.6	.30	7.5	.41	9.1	.50	10.9	.59
300 PSI	.94	.26	1.48	.41	1.97	.55	2.38	.67	2.87	.80
20.7 BAR	3.6	.26	5.6	.41	7.5	.55	9.0	.67	10.9	.80
400 PSI	.95	.33	1.47	.50	1.96	.67	2.37	.83	2.85	1.00
27.6 BAR	3.6	.33	5.6	.50	7.4	.67	9.0	.83	10.8	1.00
500 PSI	.94	.39	1.47	.60	1.96	.81	2.36	.97	2.83	1.19
34.5 BAR	3.6	.39	5.6	.60	7.4	.81	8.9	.97	10.7	1.19
600 PSI	.93	.45	1.46	.69	1.95	.93	2.35	1.13	2.81	1.38
41.4 BAR	3.5	.45	5.5	.69	7.4	.93	8.9	1.13	10.6	1.38
700 PSI	.93	.52	1.46	.78	1.94	1.06	2.33	1.27	2.80	1.54
48.3 BAR	3.5	.52	5.5	.78	7.3	1.06	8.8	1.27	10.6	1.54
800 PSI	.93	.58	1.45	.87	1.93	1.16	2.32	1.42	2.79	1.69
55.2 BAR	3.5	.58	5.5	.87	7.3	1.16	8.8	1.42	10.6	1.69

Dimensions	
Standard	Metric
A. 5 1/8"	130 mm
B. 2 3/16"	65 mm
C. 4 1/4"	108 mm
D. 6 3/8"	168 mm
E. 3 1/2"	89 mm
F. 4 3/16"	109.5 mm
G. 1 1 3/16"	46 mm
H. Hollow Shaft	
7/8"	22 mm
H. Solid Shaft	
1 1/4"	32 mm



Small Twin®

Models 5321C, 5322C, 5321C-H and 5322C-H



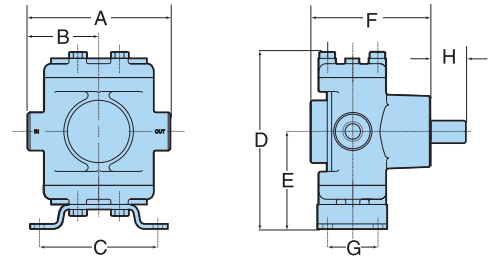
Features

- Max. flow: 2.2 gpm/8.3 lpm
- Max. pressure: 1000 psi/69.0 bar
- Max. rated speed: 1800 rpm
- Max. fluid temperature: 180°F/82°C
- Shaft size: 5/8" O.D. solid shaft, 5/8" I.D. hollow shaft
- Port sizes: 1/2" inlet, 1/2" outlet
- Weight: 11 lbs./5 kg
- Pump shaft rotation: bi-rotational
- Plungers: stainless steel (5321), polished ceramic (5322)
- Injector head available
- Models 5321 and 5322 require a pulsation dampener (such as a 3375-0012 pulse hose) on the discharge side

Dimensions

Standard	Metric
A. 5 1/8"	130 mm
B. 2 9/16"	65 mm
C. 4 1/4"	108 mm
D. 6 5/8"	168 mm
E. 3 1/2"	89 mm
F. 4 7/16"	109.5 mm
G. 1 13/16"	46 mm
H. Hollow Shaft	
7/8"	22 mm
H. Solid Shaft	
1 1/4"	32 mm

Pressure in PSI and BAR	GPM	HP	GPM	HP	GPM	HP	GPM	HP
	LPM	HP	LPM	HP	LPM	HP	LPM	HP
	@900 RPM		@1200 RPM		@1450 RPM		@1725 RPM	
100 PSI	1.1	0.2	1.5	.3	1.8	.4	2.2	.4
6.9 BAR	4.2	0.2	5.7	.3	6.8	.4	8.3	.4
300 PSI	1.1	.4	1.5	.5	1.8	.6	2.1	.7
20.7 BAR	4.2	.4	5.7	.5	6.8	.6	7.9	.7
500 PSI	1.1	.5	1.5	.6	1.8	.7	2.1	.8
34.5 BAR	4.2	.5	5.7	.6	6.8	.7	7.9	.8
700 PSI	1.1	.6	1.5	.8	1.8	.9	2.1	1.1
48.3 BAR	4.2	.6	5.7	.8	6.8	.9	7.9	1.1
1000 PSI	1.1	.8	1.4	1.0	1.8	1.2	2.1	1.4
69.0 BAR	4.2	.8	5.3	1.0	6.8	1.2	7.9	1.4



Small Twin®

Model 53702



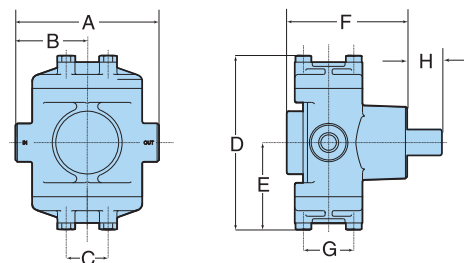
Features

- Max. flow: 2.2 gpm/8.3 lpm
- Max. pressure: 1000 psi/69.0 bar
- Max. rated speed: 3450 rpm
- Max. fluid temperature: 180°F/82°C
- Shaft size: 5/8" I.D. hollow shaft
- Port sizes: 1/2" inlet, 1/2" outlet
- Weight: 11 lbs./5 kg
- Pump shaft rotation: bi-rotational
- Plungers: polished ceramic
- Injector head available
- Model 53702 requires a pulsation dampener (such as a 3375-0012 pulse hose) on the discharge side
- Inlet requirements: pressure feed 20-100 psi

Dimensions

Standard	Metric
A. 5 1/8"	130 mm
B. 2 9/16"	65 mm
C. 1 1/2"	38 mm
D. 6 1/4"	159 mm
E. 3 3/8"	79 mm
F. 4 7/16"	109.5 mm
G. 1 13/16"	46 mm
H. 7/8"	22 mm

Pressure in PSI and BAR	GPM	HP
	LPM	HP
	@3450 RPM	
100 PSI	2.3	.4
6.9 BAR	8.7	.4
300 PSI	2.2	.7
20.7 BAR	8.3	.7
500 PSI	2.1	.9
34.5 BAR	8.0	.9
700 PSI	2.1	1.2
48.3 BAR	8.0	1.2
1000 PSI	2.0	1.5
69 BAR	7.6	1.5



Electric motor—1 1/2 hp

Small Twin[®]

Model 53703



Features

- Max. flow: 2.3 gpm/8.7 lpm
- Max. pressure: 1000 psi/69.0 bar
- Max. rated speed: 3100 rpm
- Max. fluid temperature: 180°F/82°C
- Shaft size: 5/8" I.D. hollow shaft
- Port sizes: 1/2" inlet, 1/2" outlet
- Weight: 11 lbs./5 kg
- Pump shaft rotation: bi-rotational
- Plungers: polished ceramic
- Injector head available
- Model 53703 requires a pulsation dampener (such as a 3375-0012 pulse hose) on the discharge side
- Inlet requirements: pressure feed 20-100 psi

Dimensions

Standard	Metric
A. 5 1/8"	130 mm
B. 2 3/16"	65 mm
C. 1 1/2"	38 mm
D. 6 1/4"	159 mm
E. 3 1/8"	79 mm
F. 4 5/16"	109.5 mm
G. 1 13/16"	46 mm
H. 7/8"	22 mm

Pressure in PSI and BAR	GMP	HP
	LPM	HP
	@3100 RPM	
100 PSI	2.3	0.4
6.9 BAR	8.7	0.4
300 PSI	2.2	.7
20.7 BAR	8.3	.7
500 PSI	2.1	.9
34.5 BAR	7.9	.9
700 PSI	2.1	1.2
48.3 BAR	7.9	1.2
1000 PSI	2.0	1.5
69.0 BAR	7.6	1.5

