

# Roller Pumps

## Heavy-duty, Positive-Displacement Pumps

Hypro roller pumps are the most popular pumps worldwide for agricultural tasks. These low-cost, highly-versatile pumps are used for spraying and transferring a variety of fluids including insecticides, herbicides, fungicides, emulsives, aromatic solvents, liquid fertilizers and many other non-abrasive liquids. All pumps (excluding the 1200 Series) are available in three materials; Cast Iron, Ni-Resist or Silver Series XL™. On average, the Silver Series XL™ pumps last up to 2½ times longer\* than the competition. (See page 59 for further details.)

These pumps contain rollers that revolve inside the pump housing to force the spray solution through the outlet to the nozzle. Hypro roller pumps are easily adaptable to PTO, gas engine or electric motor drives. The pumps operate efficiently at PTO speeds of 540 and 1000 rpm. Pressure ranges are up to 300 psi (20.7 bar) with flow rates of 2 to 74 gpm (7.6 to 280 lpm).

\* Based on independent laboratory tests.

Hypro roller pump quality features:

- Housing available in Cast Iron, Ni-Resist or Silver Series XL™.
  - Ni-Resist is a high nickel content alloy for better corrosion resistance.
  - Silver Series XL™ has a custom alloy that provides the best corrosion resistance and is *Ready for use with Roundup®*.
- Self-priming operation; roller pumps should NOT be run dry.
- Adaptable to PTOs or gas engines.
- Standard seals are Viton or Buna-N.
- Standard Super Rollers provide the chemical resistance of polypropylene and the life of nylon.
- Super Rotor provides superior wear, corrosion resistance and prolonged pump life. Standard in 6500, 7560 and 7700 Series. (See page 58 for details).



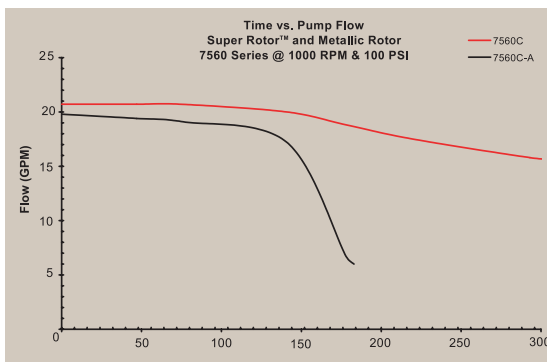
# Super Rotor

Hypro manufactures all 6500, 7560 and 7700 Series Cast Iron, Ni-Resist and Silver Series XL™ roller pumps with the Super Rotor as the standard rotor (date code of 04033-XXXXX and higher). Metallic rotors are still available by adding suffix letter “A” to the part number (ex. 7560XL-A). To find out which material best suits your application, contact Hypro’s Technical/Applications Dept. at 800-445-8360.



## Super Rotor Features & Benefits:

- Pumps containing a Super Rotor have up to two times the life of a pump with a metallic rotor (see chart below).
- The engineered thermoset resin material is durable and provides excellent resistance to wear, oxidation and chemical attack which extends pump life.
- The smooth surface of the Super Rotor prolongs the life of Super Rollers™, which preserves pump performance and overall pump life (see picture below).
- New floating rotor design allows the rotor to automatically align itself in the center of the pump cavity, preventing premature wear on the side walls of the pump body and cover, as well as the rotor itself.
- Chemically-resistant floating rotor prevents pump seize between operations, which requires less maintenance.
- Smooth roller slots lower noise level of the pump.
- Superior product improvement at no additional cost.

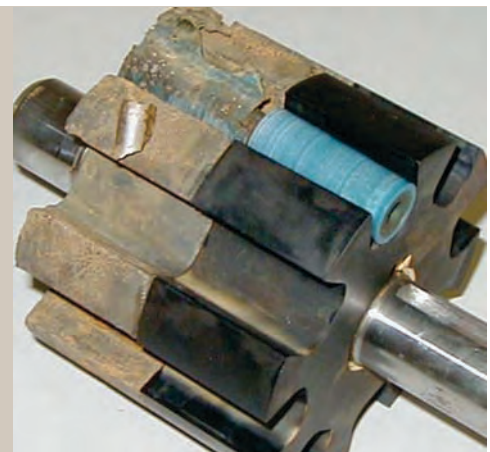


The adjacent graph shows pump performance degradation over the life of the pump as it operates at 100 psi and 1000 rpm. The pump containing the metallic rotor (7560C-A) experienced a dramatic drop off after approximately 150 hours. The pump containing the new Super Rotor (7560C) continued to function with minimal degradation while running under the same conditions as the pump containing the metallic rotor.

Both rotors pictured to the right were used in the test above. The metallic rotor (left) has completed 180 hours of testing, while the Super Rotor (right) has 310 hours.

In a side by side comparison of the two rotors, the Super Rotor makes a dramatic visual statement of its durability, strong wear characteristics, oxidation resistance and overall solid, sturdy construction. Due to the smooth surfaces of the Super Rotor, the roller life is prolonged, which in turn preserves pump performance and overall pump life.

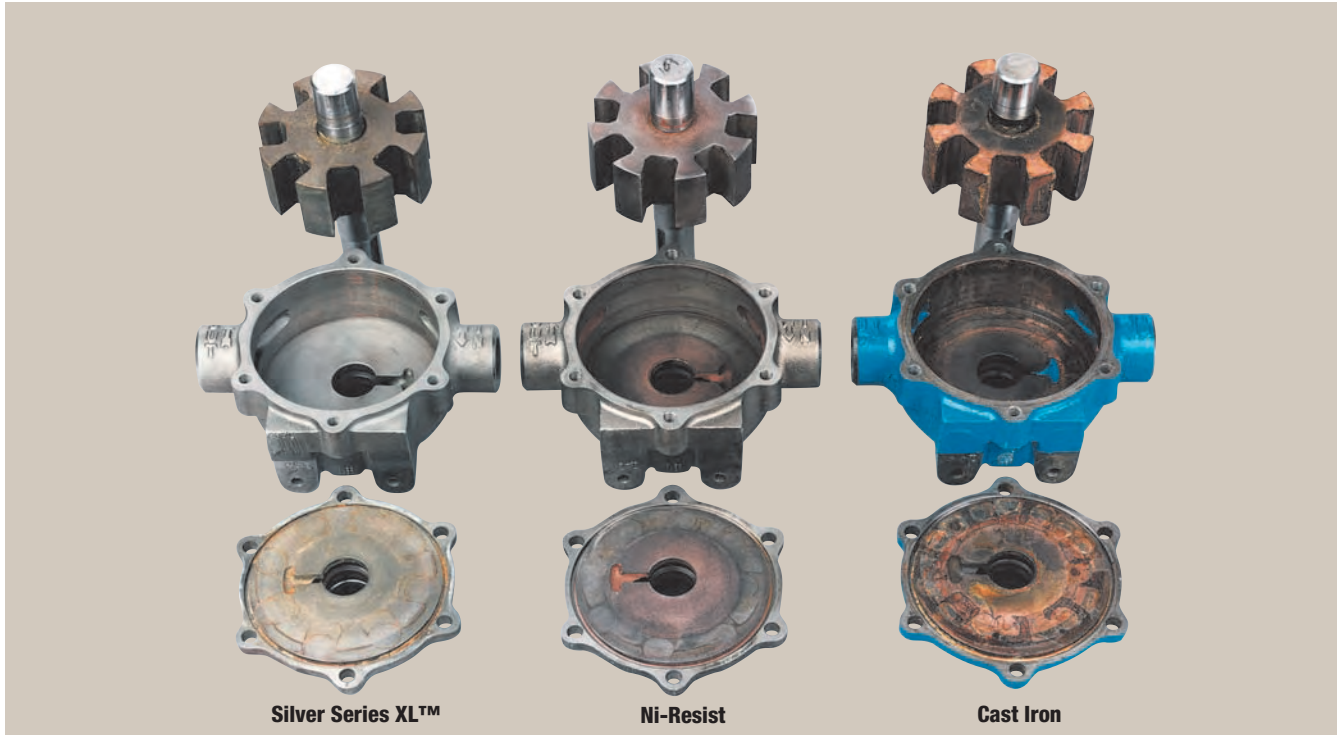
Upon close examination, you will see that the metallic rotor is eroded and pitted. Surface roughness of the rotor is a major contributing factor to decreasing a roller’s longevity.



# Roller Pump Comparisons

## HERBICIDE USERS

Get up to 10 times longer pump life with Hypro Silver Series XL™ Roller pumps!

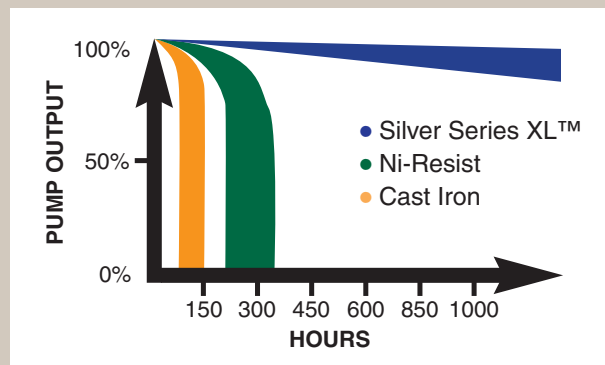


The three pumps shown above were photographed after being tested with a 30:1 mix of water and Roundup® herbicide. The Ni-Resist and Cast Iron indicate damage from pitting and corrosion, but the Silver Series XL™ is in like-new condition after more than 1000 hours of use.

## HERBICIDE USERS:

**Get up to 10 times longer pump life!**

- Cast Iron pumps lasted to 140 hours before failure.
- Ni-Resist pumps lasted to 332 hours before failure.
- Silver Series XL™ pumps ran over 1000 hours and still met new pump specs!



Roundup is a registered trademark of Monsanto Company.  
Silver Series XL is a trademark of Hypro.

# Pump Recommendations for Applications

## WHICH ROLLER PUMP, ROLLERS AND SEALS SHOULD YOU USE?

Material options for rollers and seals are listed in the order of recommendations for usage. These recommendations are only a general guide. For suggestions on specific chemicals or applications, call Hypro's Technical/Applications Department at (800) 445-8360.

APPLICATION	SPECIFIC CHEMICALS	SUGGESTED PUMP, ROLLERS AND SEALS
WEED CONTROL CHEMICALS	Emulsions, soluble powders, sodium arsenate.	Use a Silver Series XL™, Ni-Resist, or Cast Iron pump, Super Rollers and Viton seals  <b>NOTE:</b> For weed control chemicals containing glyphosate (such as Roundup®) or other acidics, use only a Silver Series pump with Super or poly rollers and Viton seals. Teflon rollers may be used up to 100 psi.
INSECT CONTROL	Emulsions not containing aromatic solvents.	
BRUSH CONTROL	Heavy-duty sprays using diesel oil for carrier.	
PEST CONTROL CHEMICALS, FUMIGANTS, ETC.	This category or use includes mosquito sprays, termite control liquids, nematocides, soil and grain fumigants where any of the following chemicals with aromatic solvents are present:  Pentachlorophenol, xylene, xylol, benzene, high sulphur fuel or diesel oil. Fumigants containing: ethylene dichloride, ethylene dibromide, carbon tetrachloride, perchlorethylene, trichlorethylene, methyl bromide, and other aromatic solvents.	Use a Silver Series XL™, Ni-Resist or Cast Iron pump with Super Rollers. Use Viton seals.
LIQUID FERTILIZERS	Up to 32% nitrogen content, or others if the liquid is atmospheric pressure and the temperature is handled.	Use a Silver Series XL™ or Ni-Resist pump with poly rollers and Buna-N seals.
POWDERED FERTILIZERS	Fertilizers dissolved in water (greenhouse plant food).	Use a Silver Series XL™, Ni-Resist or Cast Iron pump; Super, Buna-N or poly rollers and Buna-N or Viton seals.
PUMPING	Large quantities of plain water.	<b>NOTE:</b> Limit pressure to 100 psi when using Buna-N rollers or wettable powders.
SPRAYING	Wettable powder sprays.	
MATERIAL HANDLING	Heavy abrasive powders in suspension.	
ACIDS	Mild sulfuric acid for spraying. Mild muriatic acid, inhibited muriatic, etc.	Use a Silver Series XL™ pump, poly or Teflon rollers and Viton seals.  <b>NOTE:</b> Limit pressure to 100 psi when using Teflon rollers.

# Cast Iron, Ni-Resist or Silver Series XL™

Series 4001 4-Roller Includes Models: 4001C-A, 4001N-A, 4001XL-A, 4001C-AH, 4001N-AH and 4001XL-AH



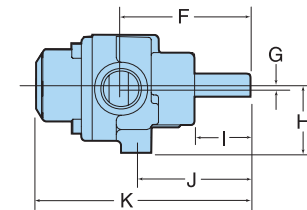
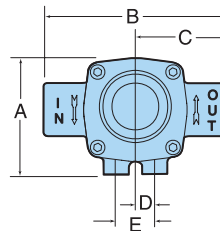
Pressure in PSI and BAR	GPM HP		GPM HP		GPM HP	
	LPM	HP	LPM	HP	LPM	HP
	@1100 RPM					
0 PSI	5.5	.06	7.1	.10	9.1	.14
0 BAR	20.8	.06	26.9	.10	34.4	.14
25 PSI	4.9	.14	6.4	.20	8.5	.30
1.7 BAR	18.5	.14	24.2	.20	32.2	.30
50 PSI	4.4	.24	5.9	.32	8.0	.46
3.4 BAR	16.6	.24	22.3	.32	30.3	.46
75 PSI	4.1	.34	5.6	.44	7.6	.62
5.2 BAR	15.5	.34	21.2	.44	28.7	.62
100 PSI	3.8	.41	5.3	.56	7.3	.78
6.9 BAR	14.4	.41	20.1	.56	27.6	.78
125 PSI	3.5	.50	5.0	.68	7.0	.95
8.6 BAR	13.2	.50	18.9	.68	26.5	.95
150 PSI	3.3	.62	4.8	.78	6.7	1.1
10.3 BAR	12.5	.62	18.2	.78	25.4	1.1

## Features

- Max. flow: 9.1 gpm/34.4 lpm at 1800 rpm
- Max. pressure: continuous 100 psi/6.9 bar; intermittent 150 psi/10.3 bar
- Max. rated speed: 1800 rpm
- Shaft size: 5/8" solid
- Port size: 3/4" NPT
- Max. fluid temperature: 140°F/60°C
- Housing: Cast Iron, Ni-Resist or Silvercast
- Pump shaft rotation: CW (CCW available)\*
- Weight: 5 lbs./2.27 kg
- Rollers: Super Rollers standard (Poly, Teflon and Buna-N available)
- Shaft Seals: Viton standard (Buna-N available)
- Available shaft adapters: See page 67
- Special torque arm and base kit is available for gas engines
- Rotor: Cast Iron, Ni-Resist or Silvercast
- Standard rotation directly couples to gasoline engines

## Dimensions

	Standard	Metric
A.	3"	76 mm
B.	4 3/4"	121 mm
C.	2 3/8"	60 mm
D.	1/2"	13 mm
E.	1"	25 mm
F.	3 3/8"	86 mm
G.	3/32"	2 mm
H.	1 3/4"	44 mm
I.	1 15/32"	37 mm
J.	3"	76 mm
K.	5 9/16"	141 mm



# Cast Iron, Ni-Resist or Silver Series XL™

Series 4101 4-Roller Includes Models: 4101C-A, 4101N-A, 4101XL-A, 4101C-AD, 4101C-AH, 4101N-AD, 4101N-AH, 4101XL-AD and 4001XL-AH



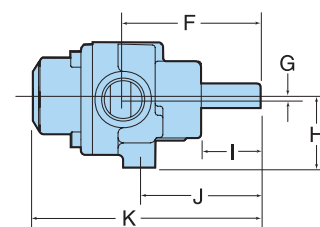
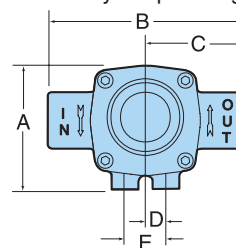
Pressure in PSI and BAR	GPM HP		GPM HP		GPM HP	
	LPM	HP	LPM	HP	LPM	HP
	@1800 RPM					
0 PSI	5.0	.11	6.2	.14	7.2	.16
0 BAR	18.9	.11	23.5	.14	27.3	.16
25 PSI	4.8	.21	5.8	.27	6.9	.30
1.7 BAR	18.1	.21	21.9	.27	26.1	.30
50 PSI	4.5	.34	5.6	.40	6.6	.46
3.4 BAR	17.0	.34	21.2	.40	25.0	.46
75 PSI	4.2	.45	5.4	.55	6.4	.62
5.2 BAR	15.9	.45	20.4	.55	24.2	.62
100 PSI	3.9	.56	5.0	.68	6.0	.76
6.9 BAR	14.8	.56	18.9	.68	22.7	.76
125 PSI	3.7	.68	4.7	.82	5.7	.92
8.6 BAR	14.0	.68	17.8	.82	21.6	.92
150 PSI	3.4	.78	4.4	.96	5.4	1.08
10.3 BAR	12.9	.78	16.6	.96	20.4	1.08

## Features

- Max. flow: 7.2 gpm/27.3 lpm at 2600 rpm
- Max. pressure: continuous 100 psi/6.9 bar; intermittent 150 psi/10.3 bar
- Max. rated speed: 2600 rpm
- Shaft size: 5/8" solid
- Port size: 3/4" NPT
- Max. fluid temperature: 140°F/60°C
- Housing: Cast Iron, Ni-Resist or Silvercast
- Pump shaft rotation: CW (CCW available)\*
- Weight: 5 lbs./2.3 kg
- Rollers: Super Rollers standard (Poly, Teflon and Buna-N available)
- Shaft Seals: Viton standard (Buna-N available)
- Available shaft adapters: See page 67
- Special torque arm and base kit is available for gas engines
- Rotor: Cast Iron, Ni-Resist or Silvercast
- Standard rotation directly couples to gasoline engines

## Dimensions

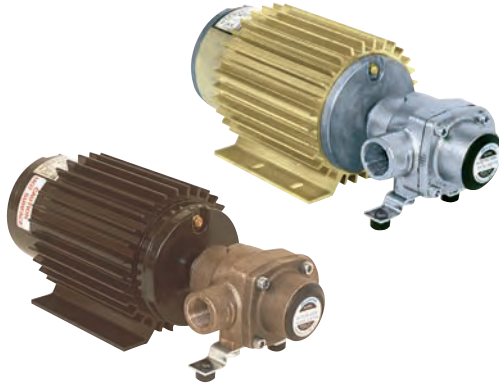
	Standard	Metric
A.	3"	76 mm
B.	4 3/4"	121 mm
C.	2 3/8"	60 mm
D.	1/2"	13 mm
E.	1"	25 mm
F.	3 3/8"	86 mm
G.	3/32"	2 mm
H.	1 3/4"	44 mm
I.	1 15/32"	37 mm
J.	3"	76 mm
K.	5 9/16"	141 mm



\* CCW (counterclockwise) and CW (clockwise) are determined when looking at the shaft end.

# Ni-Resist or Silver Series XL™

Series 4001 and 4101 12 volt DC 4-Roller Includes Models: 4001N-AEH, 4001XL-AEH, 4101N-AEH, 4101XL-AEH, 4001N-AE2H, 4001XL-AE2H, 4101N-AE2H, 4101XL-AE2H



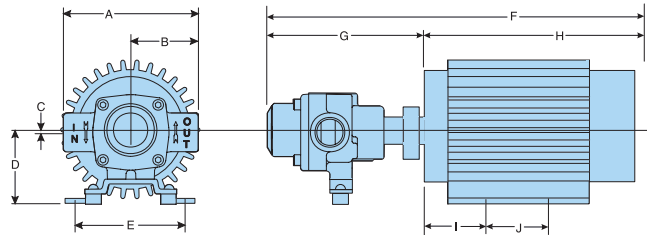
Note: All models come in either Ni-Resist or Silver Series XL housings.

## Features

- Max. flow:
  - 7.5 gpm/28.4 lpm for 4101-AEH,
  - 5.9 gpm/22.3 lpm for 4101-AE2H,
  - 10.4 gpm/39.3 lpm for 4001-AEH,
  - 9.9 gpm/37.4 lpm for 4001-AE2H
- Max. pressure:
  - 50 psi/3.4 bar continuous duty for 4101-AEH,
  - 100 psi/6.9 bar continuous duty for 4101-AE2H
  - 30 psi/2.1 bar continuous duty for 4001-AEH
  - 60 psi/4.1 bar continuous duty for 4001-AE2H
- Weight: 16-18 lbs./7.3-8.2 kg
- Super Rollers and Viton seals standard
- Pump shaft: 1/2" hollow
- Locking collar and torque arm come in each package
- Rotor: Ni-Resist or Silvercast

## Dimensions

	Standard	Metric
A.	4 3/4"	121 mm
B.	2 3/8"	60 mm
C.	3/32"	2 mm
D.	2 5/8"	67 mm
E.	3 13/16"	97 mm
F.	13 7/16"	341 mm
G.	5 5/16"	141 mm
H.	7 7/8"	200 mm
I.	2"	51 mm
J.	2"	51 mm



Series 4101-EH and 4101-E2H	Model 4101N-AEH & 4101XL-AEH			
	Volts	PSI	AMPS	GPM
	12.0 (Battery) Engine Off	0	10.0	6.3
5		11.3	6.0	
10		12.5	5.8	
15		13.7	5.6	
20		15.1	5.4	
25		16.7	5.2	
30		18.6	5.0	
35		20.3	4.8	
40		22.3	4.6	
45		24.1	4.4	
13.5 (Alternator) Engine Running	0	10.4	7.5	
	5	11.7	7.0	
	10	13.0	6.6	
	15	14.2	6.4	
	20	15.8	6.2	
	25	17.4	6.0	
	30	19.6	5.8	
	35	20.9	5.6	
	40	22.5	5.4	
	45	24.3	5.2	

Model 4101N-AE2H & 4101XL-AE2H		
PSI	AMPS	GPM
0	—	—
10	8.4	5.3
20	11.8	4.8
30	13.7	4.65
40	16.4	4.4
50	19.6	4.05
60	22.8	3.65
70	25.8	3.20
80	28.9	3.00
90	31.5	2.75
100	34.2	2.60
0	—	—
10	9.1	5.9
20	11.2	5.6
30	13.9	5.25
40	16.9	5.0
50	19.5	4.7
60	22.7	4.35
70	25.7	4.0
80	29.2	3.6
90	31.9	3.4
100	34.8	3.2

Model 4101N-AEH & 4101XL-AEH			
Volts	BAR	AMPS	LPM
12.0 (Battery) Engine Off	0	10.0	23.8
	.3	11.3	22.7
	.7	12.5	22.0
	1.0	13.7	21.2
	1.4	15.1	20.4
	1.7	16.7	19.7
	2.1	18.6	18.9
	2.4	20.3	18.2
	2.8	22.3	17.4
	3.1	24.1	16.7
13.5 (Alternator) Engine Running	0	10.4	28.4
	.3	11.7	26.5
	.7	13.0	25.0
	1.0	14.2	24.2
	1.4	15.8	23.5
	1.7	17.4	22.7
	2.1	19.6	22.0
	2.4	20.9	21.2
	2.8	22.5	20.4
	3.1	24.3	19.7

Model 4101N-AE2H & 4101XL-AE2H		
BAR	AMPS	LPM
0	—	—
.7	8.4	20.0
1.4	11.8	18.2
2.1	13.7	17.6
2.8	16.4	16.7
3.4	19.6	15.3
4.1	22.8	13.8
4.8	25.8	12.1
5.5	28.9	11.4
6.2	31.5	10.4
6.9	34.2	9.84
0	—	—
.7	9.1	22.3
1.4	11.2	21.2
2.1	13.9	19.9
2.8	16.9	18.9
3.4	19.5	17.8
4.1	22.7	16.5
4.8	25.7	15.1
5.5	29.2	13.6
6.2	31.9	12.9
6.9	34.8	12.1

Series 4001-EH and 4001-E2H	Model 4001N-AEH & 4001XL-AEH			
	Volts	PSI	AMPS	GPM
	12.0 (Battery) Engine Off	0	12.6	9.0
5		14.1	8.3	
10		15.2	8.1	
15		17.3	7.8	
20		19.7	7.2	
25		22.1	6.7	
13.5 (Alternator) Engine Running	0	13.4	10.4	
	5	14.8	9.9	
	10	16.2	9.4	
	15	18.2	8.9	
	20	20.5	8.5	
	25	22.5	8.2	

Model 4001N-AE2H & 4001XL-AE2H		
PSI	AMPS	GPM
10	13.9	8.4
20	18.0	7.9
30	22.2	7.2
35	25.0	6.9
40	27.0	6.5
50	31.6	5.9
60	36.2	5.4
10	14.4	9.9
20	18.3	9.1
30	22.3	8.5
35	24.5	8.3
40	27.0	8.0
50	31.0	7.3
60	36.1	6.8

Model 4001N-AEH & 4001XL-AEH			
Volts	BAR	AMPS	LPM
12.0 (Battery) Engine Off	0	12.6	34.1
	.3	14.1	31.4
	.7	15.2	30.7
	1.0	17.3	29.5
	1.4	19.7	27.3
	1.7	22.1	25.4
13.5 (Alternator) Engine Running	0	13.4	39.4
	.3	14.8	37.5
	.7	16.2	35.6
	1.0	18.2	33.7
	1.4	20.5	32.2
	1.7	22.5	31.0

Model 4001N-AE2H & 4001XL-AE2H		
BAR	AMPS	LPM
.7	13.9	31.8
1.4	18.0	29.9
2.1	22.2	27.3
2.4	25.0	26.1
2.8	27.0	24.6
3.5	31.6	22.3
4.1	36.2	20.4
.7	14.4	37.5
1.4	18.3	34.4
2.1	22.3	32.2
2.4	24.5	31.4
2.8	27.0	30.3
3.5	31.0	27.6
4.1	36.1	25.7

# Cast Iron, Ni-Resist or Silver Series XL™

Series 6500 6-Roller Includes Models: 6500C, 6500N, 6500XL



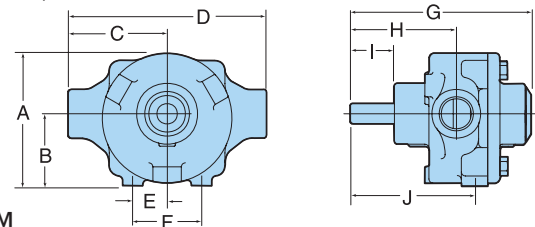
Pressure in PSI and BAR	GPM HP		GPM HP		GPM HP	
	LPM	HP	LPM	HP	LPM	HP
	@540 RPM		@1000 RPM		@1200 RPM	
0 PSI	9.7	.08	18.2	.20	21.8	.30
0 BAR	36.7	.08	68.9	.20	82.5	.30
50 PSI	8.0	.38	16.5	.71	20.1	.90
3.4 BAR	30.3	.38	62.4	.71	76.1	.90
100 PSI	7.2	.68	15.4	1.26	19.1	1.51
6.9 BAR	27.3	.68	58.3	1.26	72.3	1.51
150 PSI	6.6	.97	14.7	1.80	18.2	2.14
10.3 BAR	25	.97	55.6	1.80	68.9	2.14
200 PSI	5.6	1.29	14.0	2.34	17.3	2.84
13.8 BAR	21.2	1.29	53	2.34	65.5	2.84
250 PSI	4.9	1.65	13.4	2.91	16.5	3.48
17.2 BAR	18.5	1.65	50.7	2.91	62.4	3.48
300 PSI	4.3	1.91	12.7	3.47	15.7	4.17
20.7 BAR	16.3	1.91	48.1	3.47	59.4	4.17

## Features

- Max. flow: 9.7 gpm/36.7 lpm at 540 rpm;  
18.2 gpm/68.9 lpm at 1000 rpm;  
21.8 gpm/82.5 lpm at 1200 rpm
- Max. pressure: continuous 100-150 psi/6.9-10.3 bar;  
intermittent 300 psi/20.7 bar
- Max. rated speed: 1200 rpm
- Shaft size: 5/8" solid
- Port size: 3/4" NPT
- 1" hose barb inlet fitting for 1000 rpm operation
- Max. fluid temperature: 140°F/60°C
- Housing: Cast Iron, Ni-Resist or Silvercast
- Pump shaft rotation: CCW (CW available)\*
- Weight: 9 lbs./4.1 kg
- Rollers: Super Rollers standard (Poly, Teflon and Buna-N available)
- Shaft Seals: Viton standard (Buna-N available)
- Available PTO adapters: See page 67
- Recommended PTO torque arm kit 3430-0540
- Rotor: Super Rotor standard (Cast Iron, Ni-Resist and Silvercast available. Add "-A" when ordering.)

## Dimensions

Standard	Metric
A. 4 3/8"	104 mm
B. 2 7/8"	56 mm
C. 3 1/8"	78 mm
D. 6 1/8"	156 mm
E. 1 1/8"	27 mm
F. 2 1/8"	54 mm
G. 5 1/2"	142 mm
H. 3 3/2"	83 mm
I. 1 3/8"	35 mm
J. 3 7/8"	48 mm



# Cast Iron, Ni-Resist or Silver Series XL™

Series 7560 8-Roller Includes Models: 7560C, 7560N, 7560XL



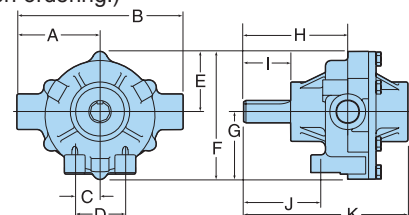
Pressure in PSI and BAR	GPM HP		GPM HP		GPM HP	
	LPM	HP	LPM	HP	LPM	HP
	@540 RPM		@800 RPM		@1000 RPM	
0 PSI	12	.33	18.3	.89	22.5	1.56
0 BAR	45.4	.33	69.3	.89	85.2	1.56
50 PSI	11.1	.74	17.5	1.26	22	1.78
3.4 BAR	42	.74	66.2	1.26	83.3	1.78
100 PSI	10.3	1.25	16.9	1.95	21.3	2.53
6.9 BAR	39	1.25	64	1.95	80.6	2.53
150 PSI	9.5	1.77	16.1	2.65	20.6	3.5
10.3 BAR	36	1.77	60.9	2.65	78	3.5
200 PSI	8.6	2.26	15.5	3.4	20	4.2
13.8 BAR	32.5	2.26	58.7	3.4	75.7	4.2
250 PSI	7.0	2.78	14.5	4.2	18.9	5.3
17.2 BAR	29.5	2.78	54.9	4.2	71.5	5.3
300 PSI	7.1	3.3	18.9	5.3	18.0	6.1
20.7 BAR	26.9	3.3	51.9	5.3	68.1	6.1

## Features

- Max. flow: 12 gpm/45.4 lpm at 540 rpm;  
22.5 gpm/85.2 lpm at 1000 rpm
- Max. pressure: continuous 100 psi/6.9 bar;  
intermittent 300 psi/20.7 bar
- Max. rated speed: 1000 rpm
- Max. fluid temperature: 140°F/60°C
- Shaft: 1 5/16" solid
- Port sizes: 3/4" NPT
- 1" hose barb inlet fitting for 1000 rpm operation
- Housing: Cast Iron, Ni-Resist or Silvercast
- Shaft rotation: CCW (CW available)\*
- Weight: 13 lbs./5.89 kg
- Rollers: Super Rollers standard (Poly, Teflon and Buna-N available)
- Shaft Seals: Viton standard (Buna-N available)
- Available PTO adapters: See page 67
- Recommended PTO torque arm kit 3430-0540
- Rotor: Super Rotor Standard. (Cast Iron, Ni-Resist and Silvercast available. Add "-A" when ordering.)

## Dimensions

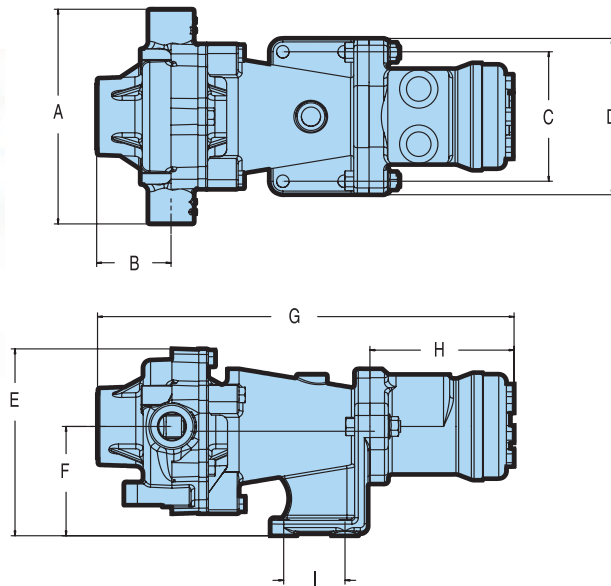
Standard	Metric
A. 3 1/2"	89 mm
B. 7"	178 mm
C. 1 1/8"	27 mm
D. 2 1/8"	64 mm
E. 2 1/2"	64 mm
F. 5 3/8"	137 mm
G. 2 1/8"	65 mm
H. 4 3/8"	111 mm
I. 1 3/2"	50 mm
J. 3 1/4"	83 mm



\* CCW (counterclockwise) and CW (clockwise) are determined when looking at the shaft end.

# Cast Iron, Ni-Resist or Silver Series XL™

Series 7560-GM30 8-Roller Includes Models: 7560C-GM30, 7560N-GM30, 7560XL-GM30



## Dimensions

	Standard	Metric
A.	7"	178 mm
B.	2 7/16"	62 mm
C.	4 7/32"	107 mm
D.	5 3/32"	129 mm
E.	6 3/32"	155 mm
F.	3 9/16"	91 mm
G.	13 19/32"	345 mm
H.	4 11/16"	119 mm
I.	2"	51 mm

## Features

- Powered by a Sauer Danfoss hydraulic motor for low rpm applications
- Max. flow: 20.1 gpm at 12 gpm hydraulic flow/  
75.3 lpm at 45 lpm hydraulic flow
- Max. pressure: continuous 100 psi/6.9 bar;  
intermittent 300 psi/20.7 bar
- Max. rated speed: 1000 rpm
- Max. fluid temperature: 140°F/60°C
- Pump port size: 3/4" NPT
- 1" hose barb inlet fitting for 1000 rpm operation
- Housing: Cast Iron, Ni-Resist or Silvercast
- Rollers: Super Rollers standard (Poly, Teflon and Buna-N available)
- Shaft Seals: Viton standard (Buna-N available)
- Rotor: Super Rotor standard (Cast Iron, Ni-Resist and Silvercast available. Add "-A" when ordering.)
- Motor port size: 3/8" - 14" UNF

### 7560N-GM30

### English Standard

Hyd. GPM	GPM at 0 PSI	GPM at 25 PSI	GPM at 50 PSI	GPM at 77 PSI	GPM at 100 PSI	GPM at 125 PSI	GPM at 150 PSI	GPM at 200 PSI	GPM at 250 PSI	GPM at 300 PSI
5.9	.0	8.5	7.8	7.3	6.7	6.1	5.5	4.4	3.3	2.2
6	10.5	10.0	9.5	8.9	8.4	7.8	7.3	6.2	5.2	4.1
7	11.9	11.5	11.0	10.4	9.9	9.4	8.9	7.8	6.8	5.7
8	13.7	13.1	12.5	12.0	11.5	10.9	10.4	9.4	8.4	7.3
9	15.2	14.6	14.1	13.6	13.1	12.6	12.1	11.1	10.0	9.1
10	16.9	16.5	15.9	15.4	14.9	14.3	13.9	12.9	11.9	11.0
11	18.6	18.2	17.6	17.1	16.6	16.1	15.6	14.7	13.8	12.9
12	20.1	19.6	19.1	18.6	18.1	17.6	17.1	16.3	15.3	14.5

### 7560N-GM30

### Metric

Hyd. LPM	LPM at 0 BAR	LPM at 2 BAR	LPM at 4 BAR	LPM at 6 BAR	LPM at 8 BAR	LPM at 10 BAR	LPM at 12 BAR	LPM at 14 BAR	LPM at 16 BAR	LPM at 18 BAR	LPM at 20 BAR
20	35.8	33.2	30.5	28.1	25.6	23.4	20.9	18.5	15.8	12.6	10.0
25	42.8	39.5	36.8	34.0	31.8	29.2	26.2	23.7	21.6	18.9	16.4
30	51.8	49.0	45.8	43.0	40.3	37.9	35.3	33.3	31.1	28.9	26.2
35	58.1	55.8	52.7	50.1	47.7	45.5	43.1	40.9	38.8	36.3	33.5
40	67.6	64.8	62.4	60.0	57.7	55.8	53.4	51.3	48.8	46.6	44.1
45	75.3	72.7	70.4	68.1	66.0	63.8	61.8	59.8	57.8	55.7	53.3

# Roller Vane Pumps

## Hypro 7560 Series

An 8 roller vane pump - PTO driven  
(maximum flow 45 litres/min @ 540 rpm,  
maximum pressure 20 bar)

### Specification

#### Pump Body, End Plate

**& Rotor:** Cast Iron

**Drive Shaft:** Stainless Steel.

**Rollers:** Super nylon 12 as standard  
(Poly, Buna-N, Teflon  
available).

**Couplers:** All models supplied with  
1 1/8" PTO quick release  
couplers.

**Seals:** Viton standard (Buna-N &  
Leather available).

**Rotation:** Standard rotation is anti-  
clockwise. Clockwise  
rotation is an option if  
specified.

**REV/MIN:** 540 RPM recommended for  
continuous duty.

**NOTE:** Pump should never run dry.  
Care should be taken to  
ensure that the PTO shaft  
is fitted with a protective  
cover to comply with safety  
regulations.



**NOW FITTED WITH SUPER ROTORS.  
GIVES UP TO TWICE THE PUMP LIFE  
COMPARED WITH METALLIC ROTORS!**

### Weight Part No.

Hypro 7560 c/w PTO quick release  
coupler & 3/4" ports

6.0Kg

397560

0 Bar			3.4 Bar		6.9 Bar		10.3 Bar		13.8 Bar		17.2 Bar		20.7 Bar	
RPM	L/min	HP	L/min	HP	L/min	HP	L/min	HP	L/min	HP	L/min	HP	L/min	HP
540	45.4	0.33	42.0	0.74	39.0	1.25	36.0	1.77	32.5	2.29	29.5	2.78	26.9	3.3
800	69.3	0.89	66.2	1.26	64.4	1.95	60.0	2.65	58.7	3.4	54.9	4.2	51.9	4.9
1000	85.2	1.56	83.3	1.78	80.6	2.53	78.0	3.5	75.7	4.2	71.5	5.3	68.1	6.1

# Cast Iron, Ni-Resist or Silver Series XL™

Series 7700 7-Roller Includes Models: 7700C, 7700N, 7700XL



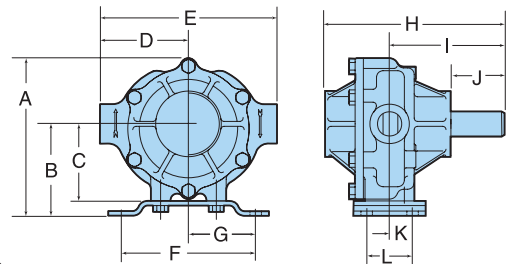
Pressure in PSI and BAR	GPM	HP	GPM	HP	GPM	HP
	LPM @540 RPM	HP	LPM @600 RPM	HP	LPM @800 RPM	HP
0 PSI	14.2	.23	15.3	.28	22.1	.37
0 BAR	53.7	.23	57.9	.28	83.6	.37
50 PSI	12.9	.56	14.0	.62	20.7	.86
3.4 BAR	48.8	.56	53	.62	78.3	.86
100 PSI	11.9	1.10	13.0	1.20	19.5	1.66
6.9 BAR	45	1.10	49.2	1.20	73.8	1.66
150 PSI	11.2	1.64	12.3	1.80	18.6	2.40
10.3 BAR	42.4	1.64	46.6	1.80	70.4	2.40
200 PSI	10.3	2.22	11.6	2.44	17.8	3.26
13.8 BAR	39	2.22	43.9	2.44	67.4	3.26

## Features

- Max. flow: 14.2 gpm/53.7 lpm at 540 rpm;  
22.1 gpm/83.6 lpm at 800 rpm
- Max. pressure: continuous 100 psi/6.9 bar;  
intermittent 200 psi/13.8 bar
- Max. rated speed: 800 rpm
- Max. fluid temperature: 140°F/60°C
- Shaft size: 1/16" solid
- Port size: 3/4" NPT
- Housing: Cast Iron, Ni-Resist or Silvercast
- Weight: 14 lbs./6.36 kg
- Pump shaft rotation: CCW (CW available)\*
- Rollers: Super Rollers standard (Poly, Teflon and Buna-N available)
- Shaft Seals: Viton standard (Buna-N available)
- Available PTO adapters: See page 67
- Recommended PTO torque arm kit 3430-0540
- Rotor: Super Rotor standard  
(Cast Iron, Ni-Resist and Silvercast available.  
Add "-A" when ordering.)

## Dimensions

Standard	Metric
A. 6"	152 mm
B. 3 1/2"	89 mm
C. 2 15/16"	75 mm
D. 3 3/8"	86 mm
E. 6 3/4"	171 mm
F. 5 1/8"	130 mm
G. 2 9/16"	65 mm
H. 6 15/16"	176 mm
I. 4 13/32"	112 mm
J. 2"	52 mm
K. 7/8"	22 mm
L. 1 3/4"	44 mm



# Cast Iron, Ni-Resist or Silver Series XL™

Series 1700 5-Roller Includes Models: 1700C, 1700N, 1700XL



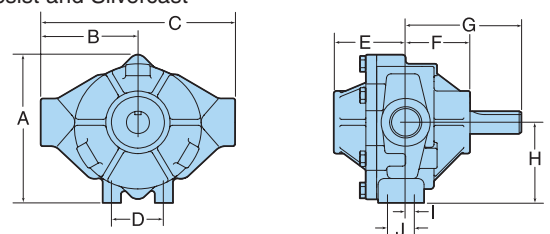
Pressure in PSI and BAR	GPM	HP	GPM	HP	GPM	HP
	LPM @540 RPM	HP	LPM @600 RPM	HP	LPM @1000 RPM	HP
0 PSI	25.0	2.7	28.0	.34	45.0	1.42
0 BAR	94.6	2.7	106	.34	170	1.42
50 PSI	21.0	1.18	24.5	1.39	43.0	3.0
3.4 BAR	79.5	1.18	92.7	1.39	163	3.0
100 PSI	19.0	2.13	22.0	2.36	41.0	4.67
6.9 BAR	71.9	2.13	83.3	2.36	155	4.67
150 PSI	17.0	2.89	20.0	3.34	39.0	6.07
10.3 BAR	64.3	2.89	75.7	3.34	148	6.07
200 PSI	15.0	3.85	18.0	4.39	—	—
13.8 BAR	56.8	3.85	681	4.39	—	—

## Features

- Max. flow: 25 gpm/94.6 lpm at 540 rpm;  
45 gpm/170 lpm at 1000 rpm
- Max. pressure: continuous 100 psi/6.9 bar;  
intermittent 200 psi/13.8 bar
- Max. rated speed: 1000 rpm
- Max. fluid temperature: 140°F/60°C
- Port size: 1" NPT
- Shaft size: 1/16" solid
- Housing: Cast Iron, Ni-Resist or Silvercast
- Pump shaft rotation: CCW (CW available)\*
- Weight: 19 lbs./8.6 kg
- Rollers: Super Rollers standard (Poly and Teflon available)
- Shaft Seals: Viton standard (Buna-N available)
- Available PTO adapters (forged steel recommended):  
See page 67
- Recommended PTO torque arm kit 3430-0540
- Rotor: Cast Iron, Ni-Resist and Silvercast

## Dimensions

Standard	Metric
A. 6 13/64"	158 mm
B. 3 21/32"	93 mm
C. 7 15/16"	202 mm
D. 2 1/8"	54 mm
E. 2 15/16"	75 mm
F. 2 5/8"	67 mm
G. 4 23/32"	120 mm
H. 3 3/8"	86 mm
I. 3/4"	19 mm
J. 1 1/8"	29 mm



\* CCW (counterclockwise) and CW (clockwise) are determined when looking at the shaft end.

# Roller Vane Pumps

## Hypro 1700 Series

A 5 roller vane pump - PTO driven (maximum flow 95 litres/min @ 540 rpm, maximum pressure 14 bar)

### Specification

#### Pump Body, End Plate & Rotor:

Cast Iron.

**Drive Shaft:** Stainless Steel.

**Rollers:** Super nylon 12 as standard (Poly & Teflon available).

**Couplers:** All models supplied with 1 1/2" PTO quick release couplers.

**Seals:** Viton standard (Buna-N & Leather available).

**Rotation:** Standard rotation is anti-clockwise. Clockwise rotation is an option if specified.

**REV/MIN:** 540 RPM recommended for continuous duty.

**NOTE:** Pump should never run dry. Care should be taken to ensure that the PTO shaft is fitted with a protective cover to comply with safety regulations.



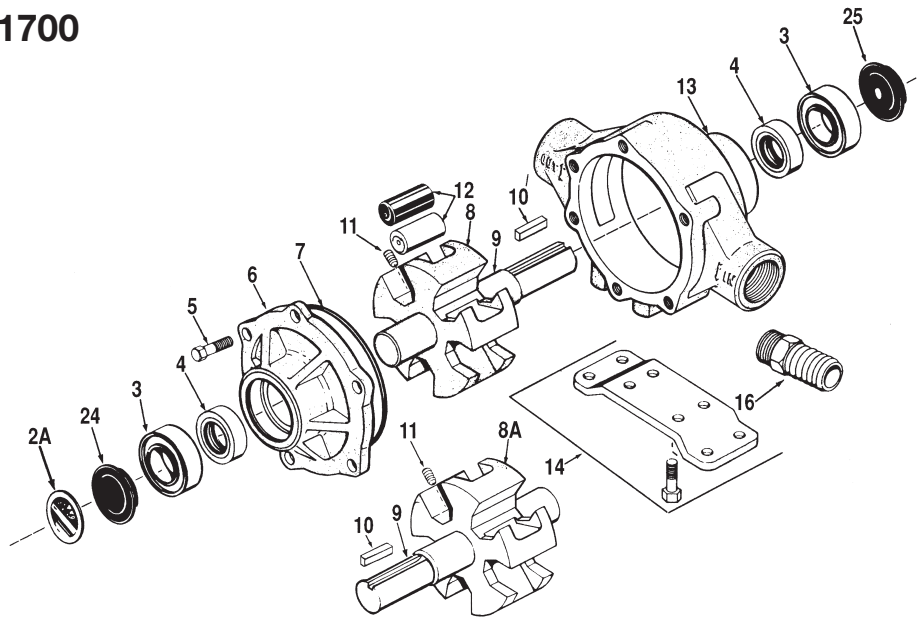
**NOW FITTED WITH SUPER ROTORS. GIVES UP TO TWICE THE PUMP LIFE COMPARED WITH METALLIC ROTORS!**

	<b>Weight</b>	<b>Part No.</b>
Hypro 1700 c/w PTO quick release coupler 1" ports	9.0Kg	<b>391700</b>

RPM	0 Bar			3.4 Bar		6.9 Bar		10.3 Bar		13.8 Bar	
	L/min	HP		L/min	HP	L/min	HP	L/min	HP	L/min	HP
540	94.6	0.27		79.5	1.18	71.9	2.13	64.3	2.89	56.8	3.85
600	106.0	0.34		92.7	1.39	83.3	2.36	75.7	3.34	68.1	4.39
1000	170.0	1.42		163.0	3.00	155.0	4.67	148.0	6.07	---	---

# Roller Vane Pumps Spares

## Hypro Roller Vane 1700



Item	Part No	Qty	
2	Name plate (specify pump model #)	426031-0258	1
3	Sealed ball bearing	422008-0001	2
4	Viton seal (standard)	422112-0003	2
4A	Buna-N-seal (optional)	422112-0001	2
4B	Leather seal (optional)	422103-0002	2
5	Bolt	422210-0005	6
6	Endplate (cast-iron) with seal	420200-1700C	1
6A	Endplate (Ni-resist) with seal	420200-1700N	1
6B	Endplate (silver cast) with seal	420200-1700X	1
7	O-ring gasket for endplate	421720-0099	1
8	Rotor (cast iron) with shaft (std. Rotation)	420300-1700C	1
8A	Rotor (Ni-resist) with shaft (std. Rotation)	420300-1700N	1
8B	Rotor (silver cast) with shaft (std. Rotation)	420300-1700X	1
8A	Rotor (cast iron) w/shaft (reverse rotation)	420301-1700C	1
8B	Rotor (Ni-resist) w/shaft (reverse rotation)	420301-1700N	1
8C	Rotor (silver cast) w/shaft (reverse rotation)	420301-1700X	1
9	Shaft only	420500-1502	1
10	Key	421610-0005	1
11	Set screw	422230-0018	1
11A	Set screw (silver cast only)	422230-0034	1
12	Super roller (standard)	421005-0005	5
12A	Polypropylene roller (optional)	421002-0005	5
12B	Teflon roller (optional)	421055-0005	5
13	Body (cast iron) with seal	420100-1700C	1
13A	Body (Ni-resist) with seal	420100-1700N	1
13B	Body (silver cast) with seal	420100-1700X	1
14	kitBase kit (includes: (1) base (4) bolts)	423420-0010	1
15	Quick coupler adapter for 1-3/8" 6-spline 540 rpm PTO	421321-0007	1
16	1-1/4" Hose barb	422404-0191	1
17	1-3/8" 6-spline 540 rpm PTO adapter Includes kit no. 423410-0003	421320-0033	1
18	Set screw kit	423410-0003	1
20	1-3/8" 6-spline 540 rpm PTO adapter Includes kit no. 423410-0003	421320-0038	1
21	Set screw kit	423410-0022	1
23	1-3/8" 6-spline 540 rpm PTO adapter (forged steel) Includes kit no. 423410-0031	421320-0066	1
23A	Set screw kit	423410-0031	1
24	Bearing shaft	422300-0020	1
25	Shaft bearing cover	422300-0022	1
15-23 not shown on diagram			

### Repair kits for 7560:

#### 423430-0437

consists of: (5) ref. 12 super rollers  
(1) ref. 7 O-ring gasket  
(2) ref. 4 viton seals.

#### 423430-0383

consists of: (6) ref. 12 super rollers  
(2) ref. 7 O-ring gasket  
(2) ref. 4 viton seals.

#### 423430-0160

consists of: (5) ref. 12 polypropylene rollers  
(1) ref. 7 O-ring gasket  
(2) ref. 4 buna-N seals.

#### 423430-0159

consists of: (5) ref. 12 polypropylene rollers  
(1) ref. 7 O-ring gasket

#### 423430-0161

consists of: (5) ref. 12 polypropylene rollers  
(1) ref. 7 O-ring gasket  
(2) ref. 4 viton seals

#### 423430-0407

consists of: (5) ref. 12 super rollers  
(1) ref. 7 O-ring gasket  
(2) ref. 4 viton seals  
(2) ref. 3 sealed ball bearings

# Cast Iron, Ni-Resist or Silver Series XL™

Series 1502 6-Roller Includes Models: 1502C, 1502N, 1502XL



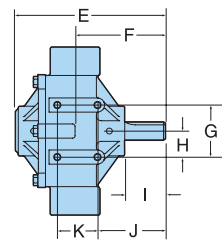
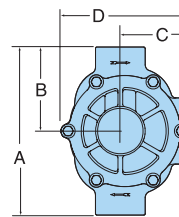
## Features

- Max. flow: 33.1 gpm/125 lpm at 540 rpm;  
62.1 gpm/235 lpm at 1000 rpm
- Max. pressure: continuous 100 psi/6.9 bar;  
intermittent 150 psi/10.3 bar
- Max. rated speed: 1000 rpm
- Max. fluid temperature: 140°F/60°C
- Port size: 1½" NPT
- Shaft size: 15/16" solid
- Housing: Cast Iron, Ni-Resist or Silvercast
- Pump shaft rotation: CCW (CW available)\*
- Weight: 30 lbs./13.6 kg
- Rollers: Super rollers standard (poly and teflon available)
- Shaft Seals: Buna-N standard on Cast Iron and Ni-Resist (Viton available); Viton standard on Silver Series XL™ (Buna-N available)
- Available PTO adapters (forged steel recommended):  
See page 67
- Rotor: Cast Iron, Ni-Resist and Silvercast

## Dimensions

Standard	Metric
A. 8 7/8"	225 mm
B. 4 7/16"	113 mm
C. 3 5/8"	92 mm
D. 6 3/4"	171 mm
E. 7 7/8"	200 mm
F. 4 3/4"	121 mm
G. 2 3/4"	70 mm
H. 1 3/8"	35 mm
I. 2 5/8"	54 mm
J. 3 5/16"	91 mm
K. 2 1/8"	54 mm

Pressure in PSI and BAR	GPM HP		GPM HP		GPM HP	
	LPM	HP	LPM	HP	LPM	HP
	@540 RPM		@600 RPM		@1000 RPM	
0 PSI	33.1	.51	36.8	.66	62.1	2.02
0 BAR	125	.51	139	.66	235	2.02
25 PSI	29.7	1.02	33.6	1.15	58.5	3.04
1.7 BAR	112	1.02	127	1.15	221	3.04
50 PSI	27.8	1.45	31.7	1.68	56.9	3.69
3.4 BAR	105	1.45	120	1.68	215	3.69
100 PSI	24.3	2.46	28.3	2.78	53.9	5.31
6.9 BAR	92	2.46	107	2.78	204	5.31
150 PSI	21.0	3.54	25.0	3.95	50.9	7.12
10.3 BAR	79.5	3.54	94.6	3.95	193	7.12



# Cast Iron

Model 1200C 4-Roller



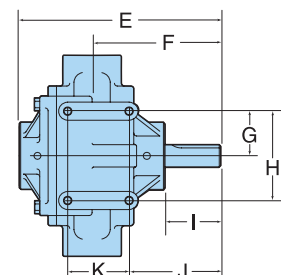
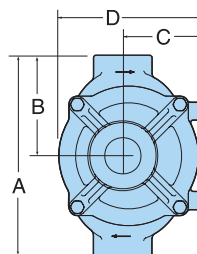
## Features

- Max. flow: 48.8 gpm/184.7 lpm at 540 rpm;  
74 gpm/280.1 lpm at 800 rpm
- Max. pressure: continuous 100 psi/6.9 bar;  
intermittent 150 psi/10.3 bar
- Max. rated speed: 800 rpm
- Max. fluid temperature: 140°F/60°C
- Shaft size: 1" solid
- Port size: 1½" NPT
- Housing: Cast Iron
- Pump shaft rotation: CCW (CW available)\*
- Weight: 32 lbs./14.5 kg
- Rollers: Super Rollers standard (Poly available)
- Shaft Seals: Buna-N standard (Viton available)
- Available PTO adapters: See page 67
- Recommended PTO mounting clip:  
Model No. 1520-0034
- Rotor: Cast Iron

## Dimensions

Standard	Metric
A. 9"	229 mm
B. 4 1/2"	114 mm
C. 3 5/8"	92 mm
D. 6 1/2"	165 mm
E. 9 1/16"	230 mm
F. 5 13/16"	148 mm
G. 2"	51 mm
H. 4"	102 mm
I. 2 9/16"	65 mm
J. 4 5/32"	106 mm
K. 2 3/4"	70 mm

Pressure in PSI and BAR	GPM HP		GPM HP		GPM HP	
	LPM	HP	LPM	HP	LPM	HP
	@540 RPM		@600 RPM		@800 RPM	
30 PSI	—	—	—	—	74.0	4.0
2.1 BAR	—	—	—	—	280.1	4.0
50 PSI	48.8	2.70	54.3	3.12	72.5	5.08
3.4 BAR	184.7	2.70	205.5	3.12	274.4	5.08
100 PSI	44.2	4.47	50.5	5.05	69.5	7.31
6.9 BAR	167.3	4.47	191.1	5.05	263.1	7.31
150 PSI	41.0	6.17	47.0	6.94	67.0	9.60
10.3 BAR	155.2	6.17	177.9	6.94	253.6	9.60



\* CCW (counterclockwise) and CW (clockwise) are determined when looking at the shaft end.

# List of Dimensions — Hypro Adapters

## PTO ADAPTERS

(Female to Female)

Part Number	PTO (I.D.)	Pump End (I.D.)	Material	RPM	Pump Model
1320-0015	3/4"	5/8"	steel	*	4000, 6500
1320-0016	5/8"	5/8"	steel	*	4000, 6500
1320-0022	1 3/8" (6 spline)	5/8"	die cast	540	6500
1320-0033	1 3/8" (6 spline)	15/16"	die cast	540	1500, 1700, 7560, 7700
1320-0038	1 3/8" (21 spline)	15/16"	die cast	1000	1500, 1700, 7560
1320-0053	1 3/8" (21 spline)	5/8"	die cast	1000	4000, 6500
1320-0054	3/4"	15/16"	die cast	*	1500, 1700, 7560, 7700
1320-0059	1 3/8" (6 spline)	1"	die cast	540	1200/5200
1320-0076	1 3/8" (6 spline)	15/16"	forged steel	540	1500, 1700, 7560, 7700
1320-0077	1 3/8" (6 spline)	5/8"	forged steel	540	6500
1320-0078	1 3/8" (21 spline)	15/16"	forged steel	1000	1500, 1700, 7560
1320-0079	1 3/8" (21 spline)	5/8"	forged steel	1000	4000, 6500
1320-0080	1 3/4" (20 spline)	15/16"	forged steel	1000	1500, 1700, 7560
1320-0081	1 3/8" (6 spline)	1"	forged steel	540	1200/5200

\* Refer to recommended pump rpm.

## QUICK COUPLERS

(Female to Female)

Part Number	PTO (I.D.)	Pump End (I.D.)	Material	RPM	Pump Model
1321-0006	1 3/8" (6 spline)	5/8"	die cast	540	6500
1321-0007	1 3/8" (6 spline)	15/16"	die cast	540	1500, 1700, 7560, 7700
1321-0008	1 3/8" (21 spline)	5/8"	die cast	1000	4000, 6500
1321-0009	1 3/8" (21 spline)	15/16"	die cast	1000	1500, 1700, 7560
1321-0012	1 3/8" (multi-speed)	5/8"	die cast	540/1000	4000, 6500
1321-0013	1 3/8" (multi-speed)	15/16"	die cast	540/1000	1500, 1700, 7560, 7700
1323-0072	1 3/8" (6 spline)	15/16"	forged steel	540	1500, 1700, 7560, 7700
1323-0073	1 3/8" (21 spline)	15/16"	forged steel	1000	1500, 1700, 7560
1323-0074	1 3/8" (6 spline)	5/8"	forged steel	540	6500
1323-0075	1 3/8" (21 spline)	5/8"	forged steel	1000	4000, 6500
1323-0076	1 3/8" (multi-speed)	15/16"	forged steel	540/1000	1500, 1700, 7560, 7700
1323-0077	1 3/8" (multi-speed)	5/8"	forged steel	540/1000	4000, 6500